

CONSERVATION BENEFITS CHARLOTTE

CONSERVATION FUND PROJECTS: RESOURCES THAT BENEFIT ALL CHARLOTTERS

 **Whalley Woods** 6 acres, 2001

 **North Charlotte Route 7 Corridor**
10 acres, 2002

 **Lavalette Farm** 26 acres, 1997

 **Knowles Farm** 99 acres, 2003

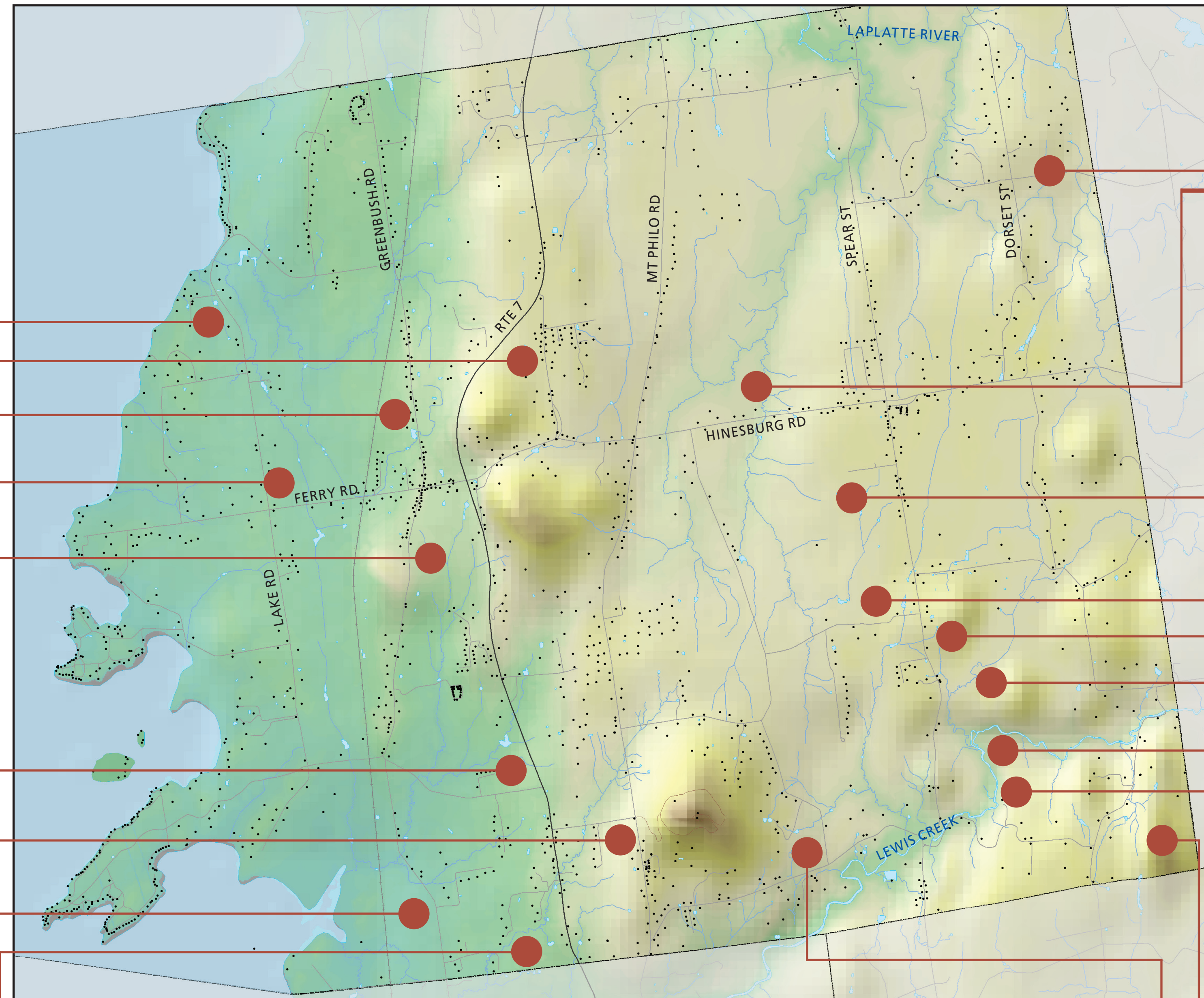
 **Burns Property** 55 acres, 2000

 **South Charlotte Route 7 Corridor**
87 acres, 2004

 **Ross Land** 40 acres, 2007

 **DeVos Farm (Charlotte portion)**
73 acres, 2004

 **Pierce Farm (Charlotte portion)**
73 acres, 2002



 **Thibault Farm** 85 acres, 2001

 **Hinsdale-Bean Farm** 239 acres, 2011

 **Nichols Farm** 229 acres, 2012

 **Hausmann-Hinsdale Farm**
56 acres, 2012

 **Burleigh Farm** 73 acres, 2009


 **Burleigh Forest** 127 acres, 2009


 **A. Johnson Forest** 188 acres, 2000


 **L. Johnson Farm** 26 acres, 2003

 **Raven Ridge (Charlotte portion)**
66 acres, 2010

 **Titus Farm** 57 acres, 2005


 **Agricultural Land** — Land with rich agricultural soils making it some of the most suitable lands in Charlotte for production of crops and/or livestock. Conservation helps ensure such properties will continue to be actively farmed, enables the passing of farms from one generation to the next, and provides for healthy, local produce to the community.

 **Scenic Resources** — Some of Charlotte's most visually or aesthetically pleasing panoramic views and vistas, including lakeshore, which can be enjoyed by all.

 **Public Access** — Private land which the owner allows free use of to the public for various specified recreational activities such as walking, snowshoeing, hunting, fishing, or cross country skiing.

 **Wildlife Habitat** — Natural areas such as wetlands, marshes, and forests that provide food, water and cover to a variety of wildlife species native to our region. Also areas that provide linkages or corridors between such areas for migration and movement.

 **Trails** — Designated paths through forest or other conserved lands for specified activities such as: hiking, cross country skiing, horseback riding, or biking.

 **Other** — Other resources that do not fall into one of the aforementioned categories, such as the Town septic capacity on the former Lavalette Property.

The Conservation Fund provides an average of 20.9% of total project costs, with the balance coming from other sources. This means that conservation projects in town receive, on average, four additional dollars for every dollar that the Conservation Fund contributes.

Conservation Fund money is available to any qualifying project or organization.

All Conservation Fund projects are presented to and approved by the Selectboard.